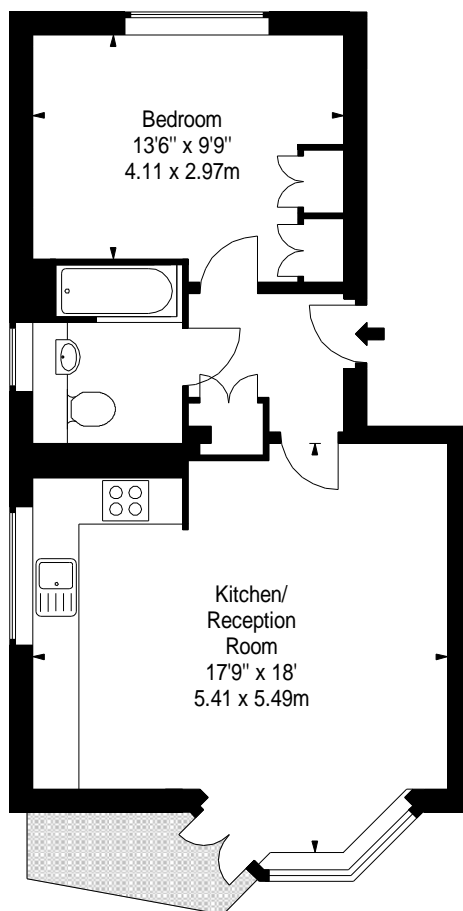


**Flat 9,  
Priory Lodge,  
Kew Bridge Court, W4**  
Approx. Gross Internal Area \*  
**527 Ft<sup>2</sup> - 48.96 M<sup>2</sup>**



**Second Floor**

Illustration For Identification Purposes Only. Not to Scale

\* As Defined by RICS - Code of Measuring Practice

**B K R**  
FLOORPLANS

(OFFICES THROUGHOUT THE UK)

T: 0845 257 2023  
[WWW.BKRFLOORPLANS.CO.UK](http://WWW.BKRFLOORPLANS.CO.UK)  
2007